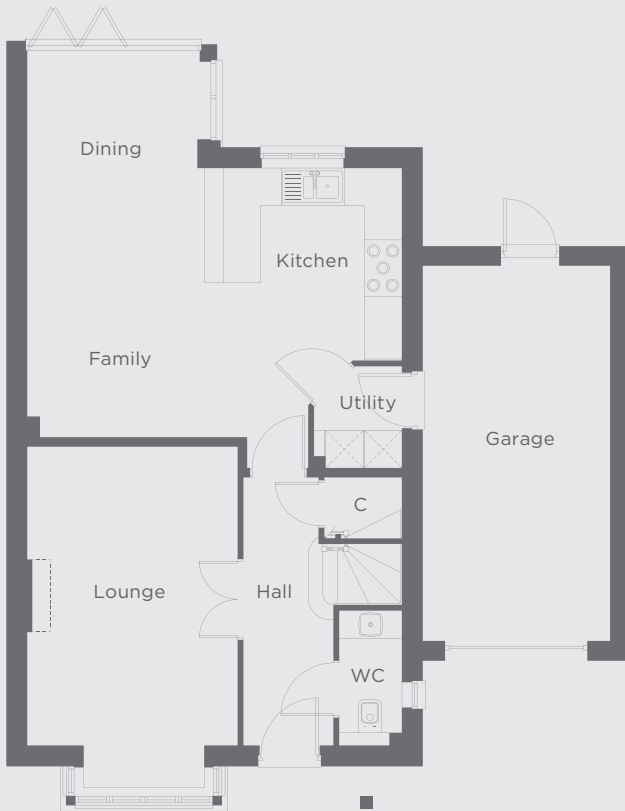
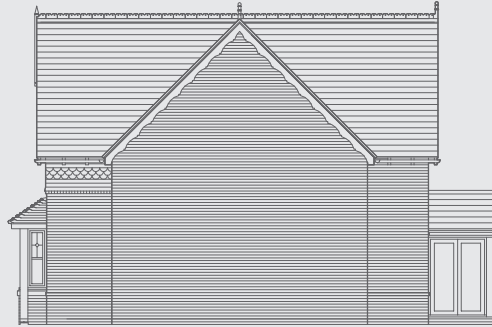


LONGFORD

PLOT 6: 4 bedroom detached home



FIVENS
PLACE



Ground floor

Lounge	5.44 x 3.36m	17'10" x 11'0"
Dining/Family	6.17 x 2.85m	20'3" x 9'4"
Kitchen	3.15 x 3.07m	10'4" x 10'1"
Utility	1.62 x 1.40m	5'4" x 4'7"
WC	2.15 x 1.00m	7'1" x 3'3"

First floor

Bed 1	4.26 x 3.15m	14'0" x 10'4"
En-suite 1	3.15 x 2.25m	10'4" x 7'5"
Bed 2	4.01 x 3.19m	13'2" x 10'6"
En-suite 2	2.25 x 1.99m	7'4" x 6'6"
Bed 3	3.64 x 3.19m	11'11" x 10'6"
Bed 4	3.75 x 2.70m	12'4" x 8'10"
Bath	2.70 x 2.15m	8'10" x 7'1"