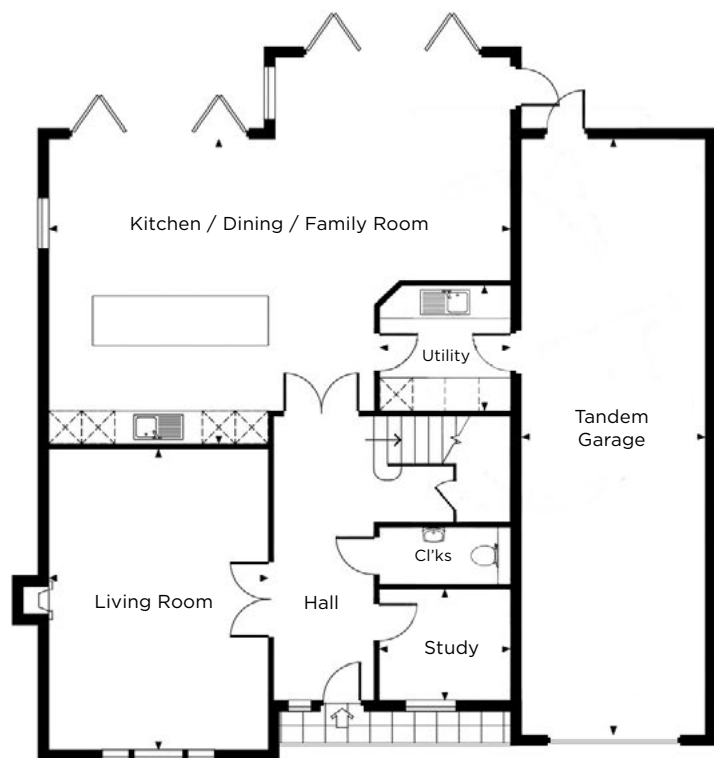
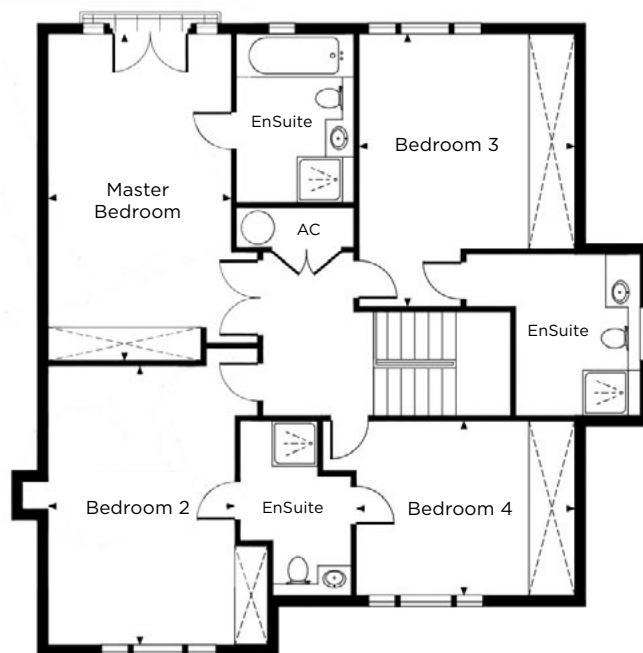


CHERRYWOOD HOUSE & MAPLE HOUSE

Plots 2 & 3 Floorplans



Ground Floor



First Floor

GROUND FLOOR

Dimensions	Metric	Imperial
Kitchen/Dining	8.4m x 5.6m	27'9" x 18'4"
Sitting Room	5.5m x 4.0m	18'1" x 13'2"
Utility Room	2.4m x 2.3m	7'10" x 7'6"
Study	2.4m x 2.0m	7'11" x 6'8"
Tandem Garage	10.9m x 3.4m	35'9" x 11'1"

FIRST FLOOR

Dimensions	Metric	Imperial
Master Bedroom	6.0m x 3.3m	19'7" x 11'0"
Bedroom 2	5.1m x 3.4m	16'9" x 11'3"
Bedroom 3	5.0m x 3.9m	16'4" x 12'11"
Bedroom 4	4.0m x 3.2m	13'1" x 10'6"

Approximate Gross internal area 235 sq m / 2530 sq ft (garage included)

Floorplans are not to scale, indicative only and are subject to change