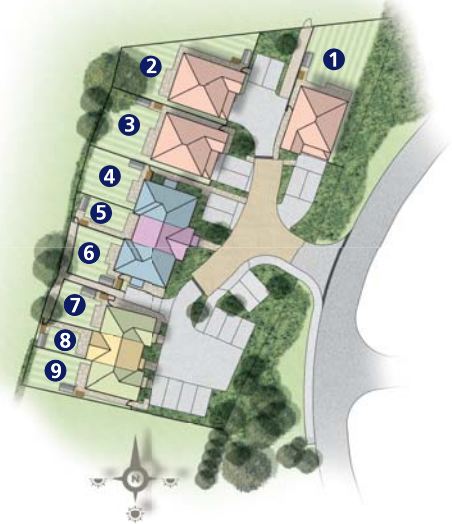


PLANS & TECHNICAL INFORMATION



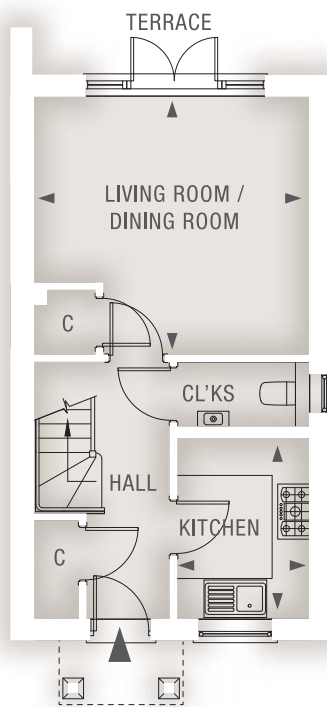
HURSTWOOD

FLIMWELL



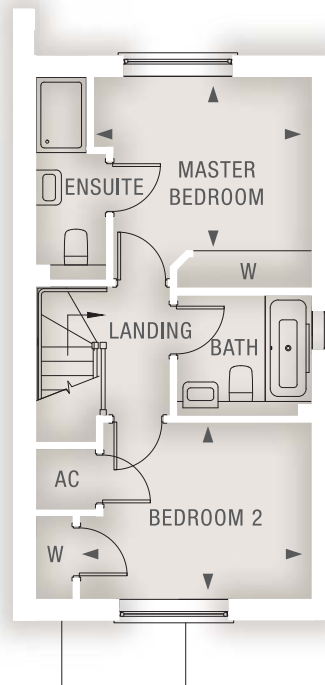
No. Seven & Nine - 2 bedroom houses

Layout for No. Seven featured. Layout for No. Nine is mirrored.



GROUND FLOOR

Dimensions	Metric	Imperial
Kitchen	2.90m x 2.13m	9'6" x 7'0"
Living/Dining Room	4.42m x 4.13m	14'6" x 13'7"



FIRST FLOOR

Dimensions	Metric	Imperial
Master Bedroom	3.50m x 3.10m	11'6" x 10'2"
Bedroom 2	3.72m x 2.83m	12'2" x 9'3"

