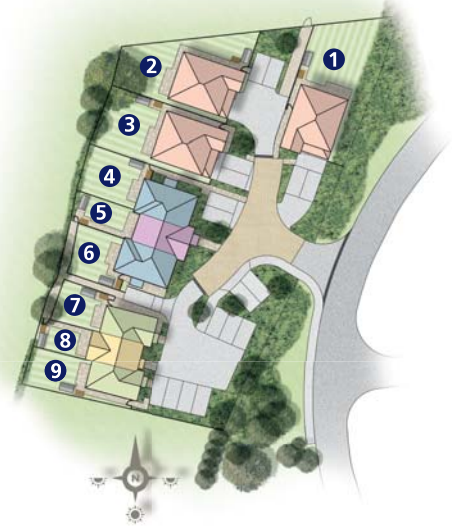




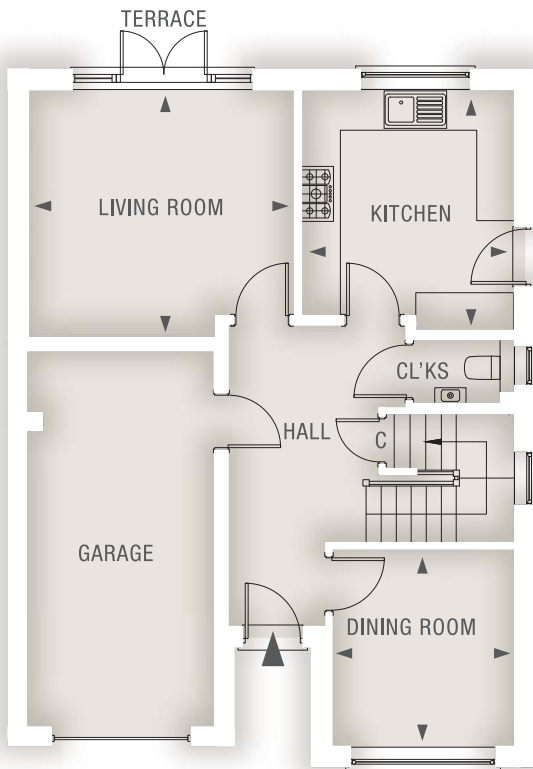
HURSTWOOD

FLIMWELL



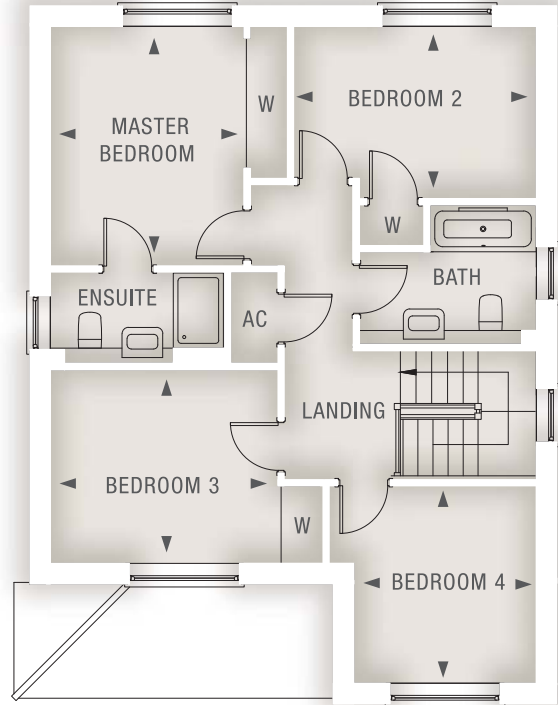
No. One, Two & Three - 4 bedroom houses, each with integral garage

Layout for No. Two & Three featured. Layout for No. One is mirrored.



GROUND FLOOR

Dimensions	Metric	Imperial
Kitchen	3.83m x 3.40m	12'7" x 11'2"
Living Room	4.27m x 3.96m	14'0" x 13'0"
Dining Room	3.16m x 2.92m	10'4" x 9'7"



FIRST FLOOR

Dimensions	Metric	Imperial
Master Bedroom	3.83m x 3.14m	12'7" x 10'4"
Bedroom 2	3.88m x 2.75m	12'9" x 9'0"
Bedroom 3	3.64m x 3.09m	11'11" x 10'2"
Bedroom 4	3.15m x 2.92m	10'4" x 9'7"

