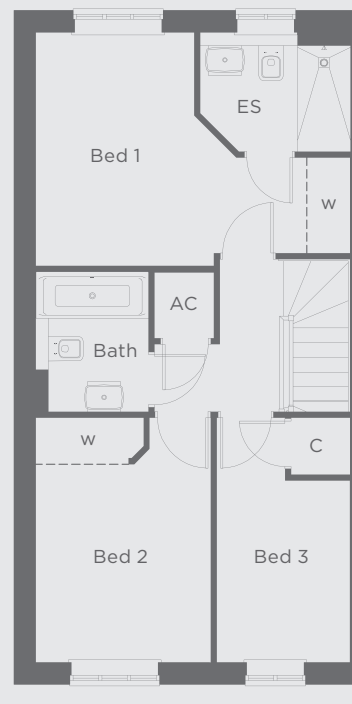
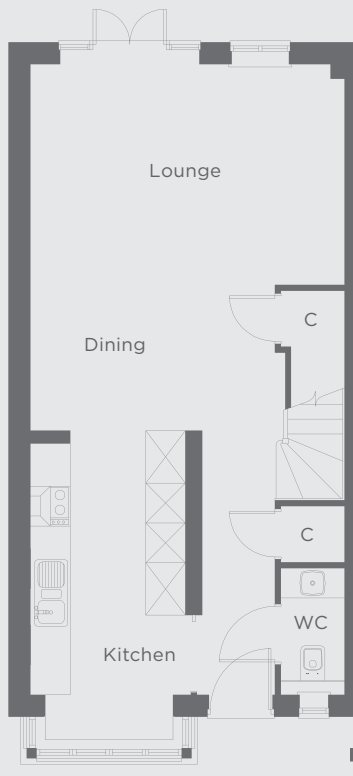
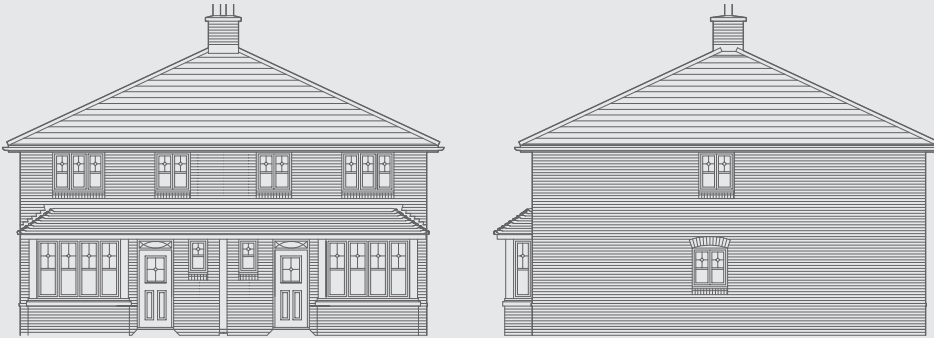


WICKLOW

PLOT 3 & 4: 3 bedroom semi-detached home



FIVENS
PLACE



Ground floor

Lounge/Dining	5.52 x 4.74m	18'1" x 15'7"
Kitchen	4.66 x 2.34m	15'3" x 7'8"
WC	1.91 x 0.96m	6'3" x 3'2"

First floor

Bed 1	4.74 x 3.53m	15'7" x 11'7"
En-suite	2.27 x 1.80m	7'5" x 5'11"
Bed 2	3.69 x 2.64m	12'1" x 8'8"
Bed 3	3.69 x 2.02m	12'1" x 6'7"
Bath	2.11 x 1.70m	6'11" x 5'7"

*Note: Plot 3 plans depicted.
Plot 4 is handed*