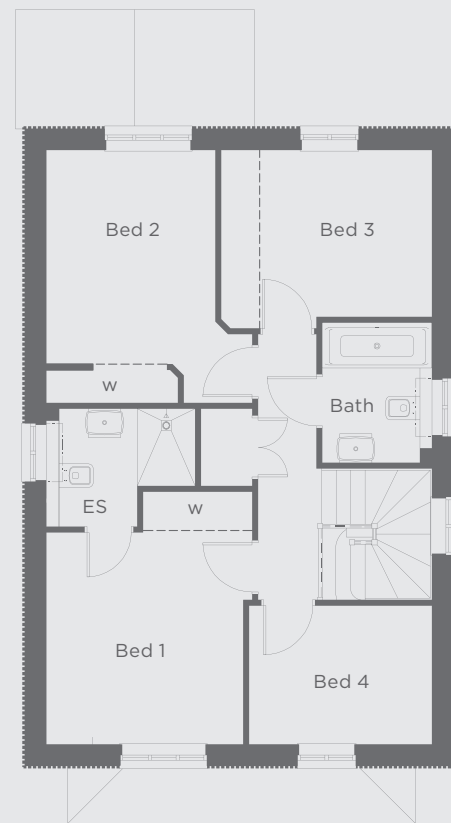
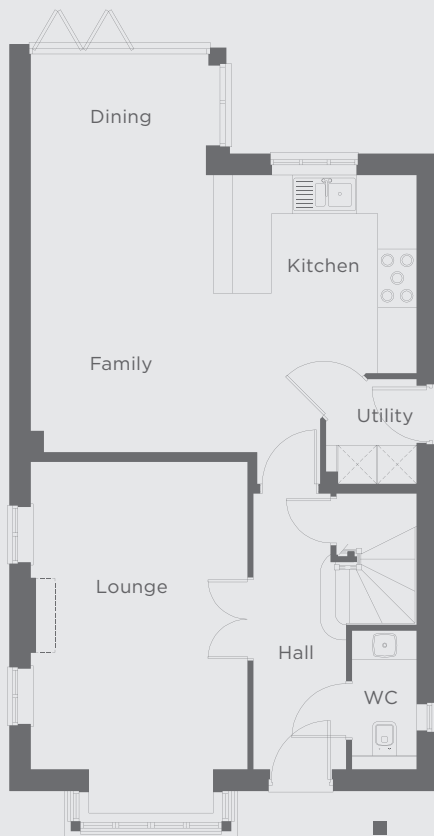


WATERFORD

PLOT 1: 4 bedroom detached home



FIVENS
PLACE



Ground floor

Lounge	5.44 x 3.36m	17'10" x 11'0"
Dining/Family	6.17 x 2.85m	20'3" x 9'4"
Kitchen	3.15 x 3.07m	10'4" x 10'1"
Utility	1.62 x 1.40m	5'4" x 4'7"
WC	2.15 x 1.00m	7'1" x 3'3"

First floor

Bed 1	3.92 x 3.19m	12'10" x 10'6"
En-suite	2.31 x 1.83m	7'7" x 6'0"
Bed 2	3.92 x 3.19m	12'10" x 10'6"
Bed 3	3.27 x 2.76m	10'9" x 9'1"
Bed 4	2.84 x 2.15m	9'4" x 7'1"
Bath	2.17 x 1.70m	7'1" x 5'7"